

# Inspector GS D4000

Bar Code Verifier  
by RJS TECHNOLOGIES



## Flexible & Cost Effective

The Inspector GS D4000 is the industry's most flexible and cost-effective ISO / ANSI bar code verifier for UPC/EAN and GS1-128 bar codes.

This unit comes with your choice of a patented Auto-Optic scan head with four aperture sizes and two light wavelengths (eight different optical configurations).

Printed reports can also be generated, using the optional direct thermal printing unit.

**Auto Optic:**  
Eight Optical Configurations

## Features

- Portability: ISO / ANSI Mode Operation Using the Auto-Optic
- Multiple Apertures and Light Wavelengths for Eight (8) Different Optical Configurations
- Traceable to the National Institute of Standards and Technology (NIST)
- Follows the ISO15416 and ANSI X3.182 Bar Code Inspection Methods (*auto-optic scan head only*)
- Conforms to ISO15426-1 Bar Code Verifier Specification
- Auto-discriminates Between All Popular Symbolologies
- Bi-directional Scanning AND Multiple Scan Averaging
- Option for Traditional Analysis and Reporting

This flexible and cost-effective unit is also easy to use, and supports the UPC/EAN and Code 128 symbolologies (including full GS1-128 support). The RJS D4000 offers store and print capability, multiple scan averaging, and sub-symbolology choices—all easily accessible through a simple four-button user interface.

Bar code analysis information appears immediately on the 32-character alphanumeric liquid crystal display (LCD), and a distinct audible tone and a series of five colored LEDs indicate whether a bar code is in or out of specification. In addition to the ISO/ANSI method parameters, Traditional Analysis parameters are provided on the LCD, without a special mode setting.



# Inspector GS D4000

Bar Code Verifier

by RJS TECHNOLOGIES

## Features

- ISO/ANSI Scan Profile Test Method
- Instant "On-Screen" ISO/ANSI Grade
- ISO/ANSI 10-scan Averaging
- Traditional Test Method
- Reflectometer Mode
- Auto-switch Symbologies
- Aperture/Wavelength selection via menu option
- Automatic Power Off
- Inspection Report Storage Buffer
- Detailed Hardcopy Printout (optional)



## Verification Methods

Parameters determined by ISO/ANSI bar code print quality guidelines and traditional pass/fail criteria. Refer to model matrix below for configurations.

	Auto-Optic
ISO	Y
ANSI	Y
Traditional	Y
Industry Applications	
SCC Retail	Y
U.P.C. Coupon Code	Y

Dimensions	Body	Auto Optic (excluding cord)
Height:	1.9 in. (4.8 cm)	3.2 in. (8.1 cm)
Width:	4.6 in. (11.7 cm)	1.9 in. (4.8 cm)
Length:	7.8 in. (19.8 cm)	5.8 in. (14.7 cm)

## Mechanical

<b>Weight:</b>	26.5 ounces (751 g)
<b>Power:</b>	4 AA Alkaline or NiCad batteries and AC Charger (optional)
<b>Case:</b>	Acrylonitrile Butadiene Styrene (ABS)
<b>Beeper:</b>	Audible tones indicate an audible pass/fail and low
<b>Display:</b>	4 line X 8 character LCD
<b>Keypad:</b>	4-button, on, select, enter, print
<b>LEDs:</b>	5 LEDs (two red, one yellow, and two green)

## Environmental

<b>Operating Temperature:</b>	50° to 105° F (10° to 40° C)
<b>Storage Temperature:</b>	14° to 158° F (-20° to 50° C)
<b>Relative Humidity:</b>	5% to 80% Non-condensing

## Optical

<b>Test Aperture:</b>	Auto-Optic option A: 3, 5, 10, and 20 mil Auto-Optic option B: 3, 6, 10, and 20 mil
<b>Wavelength:</b>	Visible: 660nm Infrared: 925nm

## Symbologies

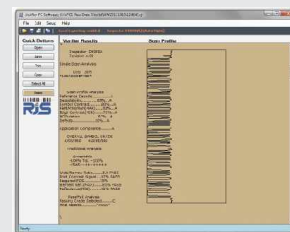
EAN/UPC with addenda, Code 128, EAN/UCC-128, UCC/EAN-128, GS1-128 (All AIs)

## Regulatory

FCC Class A, CE Certified



## Optional Accessories



Optional VCIR Software  
P/N: 002-6511 and 002-6520



Optional Battery Charger  
P/N: 002-1425 (110V)  
or  
002-1617 (220V)



Optional Report Printer  
P/N: 002-9018 (110V)  
or  
002-7181 (220V)

Inspector™ is a registered trademark of RJS Technologies, Inc. in the United States and/or other countries



RJS Technologies, Inc.

701 Decatur Avenue North, Suite 107 – Minneapolis, MN 55427 USA – +1-763-746-8034 – www.rjs1.com